



GMT MONTHLY MEMBERSHIP PROGRESS REPORT

Results as of: 1/31/2020

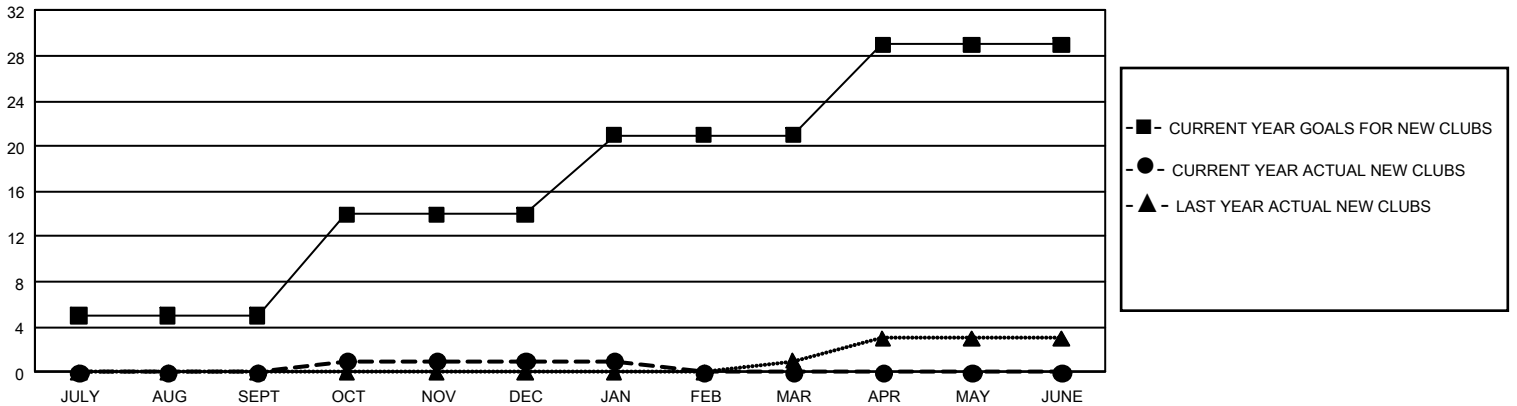
GMT Constitutional Area 1, Group E

GMT: OPEN

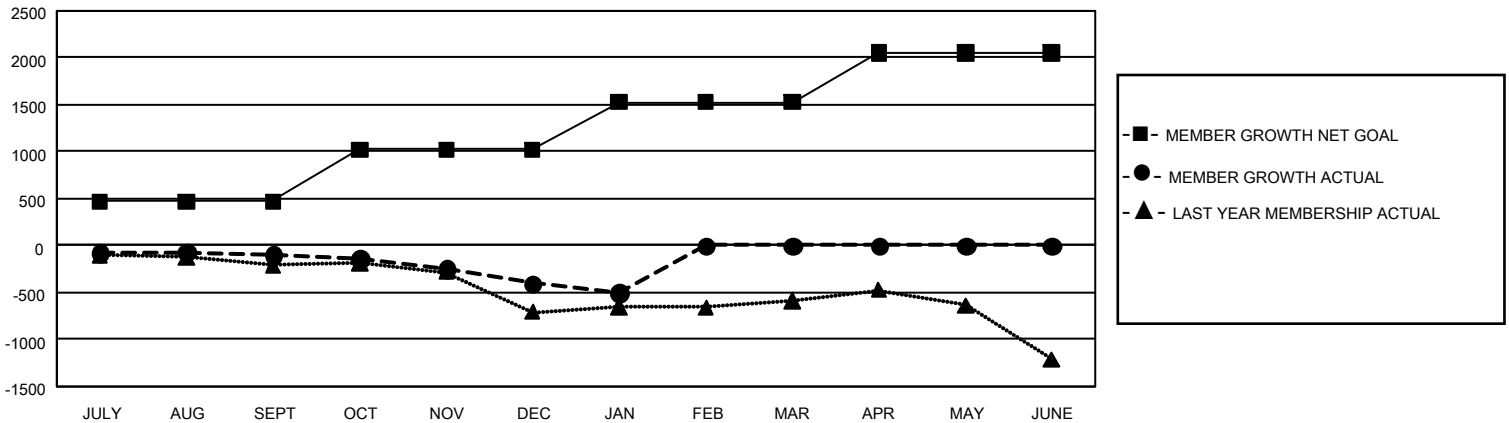
REPORT DOES NOT INCLUDE CLUBS IN UNDISTRICTED AREAS.

Clubs				Members			
RESULTS FOR 2019-2020				RESULTS FOR 2019-2020			
QUARTER	NEW CLUB GOAL	NEW CLUBS	DROPPED CLUBS	QUARTER	MEMBER GROWTH NET GOAL	MEMBER GROWTH ACTUAL	DROPPED MEMBERS ACTUAL (including transfers)
JULY/AUG/SEPT	15	0	3	JULY/AUG/SEPT	1,407	795	821
OCT/NOV/DEC	27	1	8	OCT/NOV/DEC	1,656	725	972
JAN/FEB/MAR	21	0	2	JAN/FEB/MAR	1,527	280	348
APR/MAY/JUNE	24	0	0	APR/MAY/JUNE	1,557	0	0

GOALS AND ACTUAL NEW CLUBS CUMULATIVE



GOALS AND ACTUAL MEMBERS CUMULATIVE



DROPPED CLUBS: 13	601 CLUBS OF 1,219 ADDED 1 OR MORE NEW MEMBERS	<u>GENDER DISTRIBUTION</u> MALE 27,207 (74.61%) FEMALE 9,257 (25.39%)
<u>DROPPED MEMBERS</u> DECEASED 324 CLUB CANCELLED 66 OTHER 1,751 <hr/> TOTAL 2,141	CLICK HERE FOR CUMULATIVE MEMBERSHIP DATA	TOTAL FAMILY UNIT MEMBERS 6,450 FAMILY MEMBERS PAYING HALF DUES 3,295